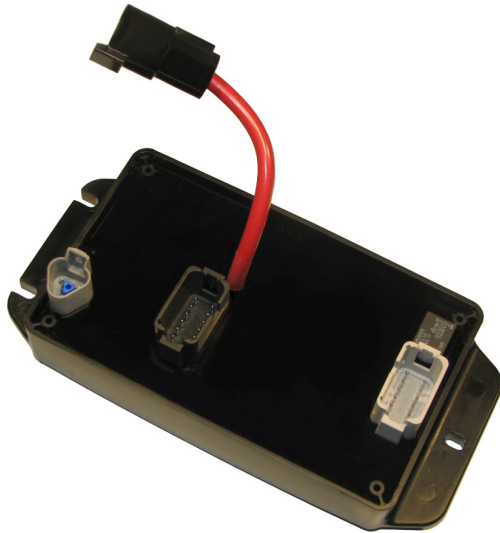


PN: 99-0020



Description

This device is a 10 channel PWM output module designed to be a cost effective solution for extreme duty applications. Each PWM output has independent control of frequency and duty cycle, making it versatile to match a wide range of applications. 8 outputs are rated to 25.5A, * 2 outputs are rated to 10.0A, with a total device current of 100A.

Product Features

- Operating voltage range of 8-32 VDC
- Reverse battery protection
- Voltage transient protection
- Short circuit and over load protection
- Up to 25.5 A per output / 100A per module
- Potted-Protection from harsh environments
- Sealed automotive (deutsch) connectors
- Small footprint
- Easy 3 point mounting / rugged ABS housing
- Output current feedback
- Adjust output current and limiting
- independent frequency and duty cycle
- Customizable

Specifications

	3 Pin Deutsch (J1939 communications) DT04-3P	1 Pin Deutsch (Power connection) DTHD04-1-4P	12 Pin Deutsch -Gray (outputs 1-6) DTF15-12PA	12 Pin-Black (outputs 7-10) DTF15-12PB
Mate Connector	DT06-3S Housing 0462-201-16141 Contact W3S - 1939 Wedge lock	DTHD06-1-8S Housing 0462-203-08141 Contact	DT06-12SA Housing 0462-201-16141 Contact W12S Wedge lock	DT06-12SB Housing 0462-201-16141 Contact W12S Wedge lock

Environmental Specification

Storage Temperature	-40° to 85°C
Operating Temperature	-40° to 85°C
IP Rating	67
Weight (No heatsink)	1.70 lbs. Typ
Weight (heatsink)	2.00 lbs. Typ

Electrical Specification

Power Supply Voltage	8-32 VDC
Output Current	25.5A * Max (Out 1-8)
Output Current	10.0A Max (Out 9-10)

*Loads that require more than 15A continuous must use module with heat sink.

Note: On highly inductive loads, outputs may require external clamping diodes to clamp inductive flyback voltage spikes to ground.

