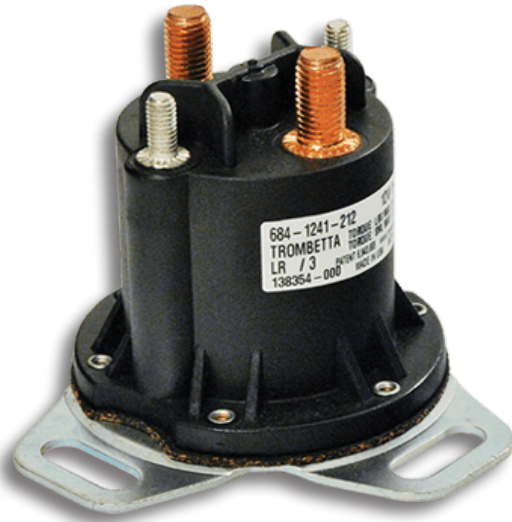




Intermittent Duty PowerSeal



Description

For over 25 years, SMP-Trombetta has provided Hydraulic Power Pack OEMs with the best performing and most valued DC Contactors in the market. Our acclaimed PowerSeal is the muscle that drives hydraulic power packs on your tractors, pallet jacks, tailgate lifts, snow plows and other applications. The #1 DC Contactor for Hydraulic Power Pack Switching. Our mission is to provide high quality DC Power Switches to match your specific hydraulic power pack's needs. Intermittent PowerSeals are certified for RoHS, REACH and Conflict Mineral Free.

Specifications

PowerSeal Specifications

Coil Terminals	1 (Grounded) or 2 (Ungrounded): 10-32 Studs
Contact Studs	5/16-24 Studs
Mounting Bracket	L, Flat, 90°, L Flat, L Curved, and Flat L Wide
Standard Operating Temperature Range	-40°C to 82°C

Coils

Contact

Model	Max Sustained Duty Cycle ¹	Max On Time	Pull In Voltage ²	Hold Voltage ²	Coil Resist Ohms	Resistive Load Carry/Interrupt Capability (Amps) ³	Inductive Load Carry/Interrupt Capability (Amps) ³	Peak Inductive Inrush Capability (Amps) ⁴	Electrical Cycle Life	Contact Material
12V Intermit.	25%	6 min.	6	3.5	5.4	150/250	150/250	800	100,000	Copper
24V Intermit.	25%	6 min.	12	7.0	20.1	150/250	150/250	800	60,000	Copper

Nominal coil voltage applied starting from 25° C DC Contactor temperature. Duty Cycle= on time/(on time+off time). Voltages listed are minimum required at 25°C coil temperature. Minimum voltage requirements will increase with coil temperature. Amps at Max Duty Cycle. Risettime ≥ 3 milliseconds to 80% of peak inrush with linear decay to run (carry) current in ≤ .1 seconds.

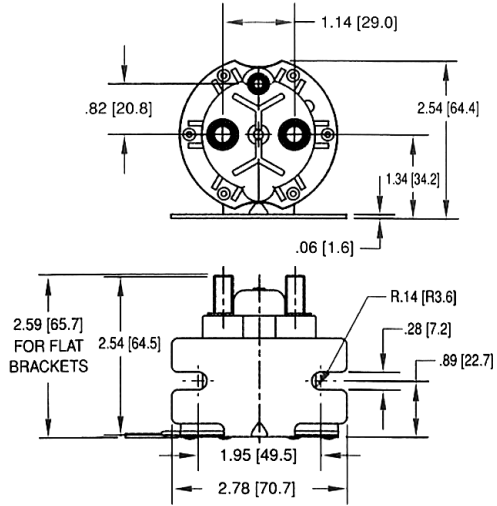
Ordering Information

Enter Part Number Below- We are able to customize orders. Some configurations are not available. Contact your Trombetta Sales Rep before ordering.

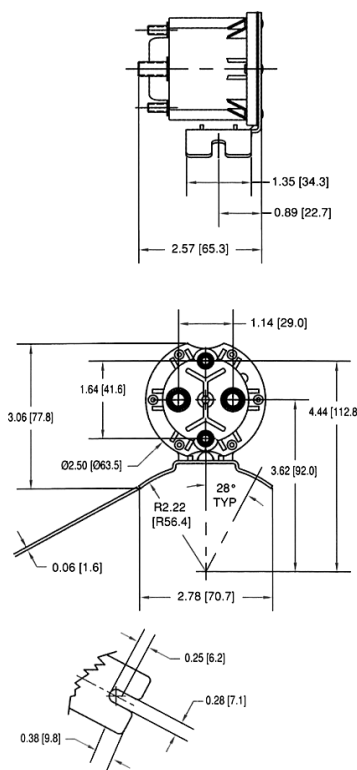
Family	Coil Connection Configuration	High Current Stud	Coil Voltage	Bracket Type	Bracket Location	Duty Cycle	Contact Material	Sealing
6 - Power Seal	3 - Grounded 10/32 8 - Non-Grounded (2) 10/32	4 - Standard Power Seal	12 - 12 Volt 15 - 15 Volt 24 - 24 Volt 36 - 36 Volt 48 - 48 Volt	1 - L Bracket, Curved 2 - Flat Bracket 3 - Curve Bracket 4 - 90 Degree Bracket 5 - L Bracket, Flat 6 - L Bracket, Curved Narrow 7 - L Bracket Flat Long	1 - Standard	0 - 100% Continuous 2 - 25%	1 - Intermittent Duty & 12V Continuous Duty-Copper, 24, 36 & 48V Continuous Duty, Silver Alloy Plated Moveable Contacts	2 - Sealed Design

Product Dimensions

L Flat Bracket

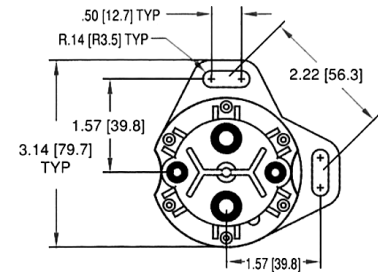


L Bracket



90° Bracket

Refer to L Bracket configuration for additional dimensions.



Flat Bracket

Refer to L Bracket configuration for additional dimensions.

